

# Faith, Hope & Healing

## St. Lawrence Church

542 Walnut St, Lawrenceburg, IN | 812-537-3992 | [www.stlawrencechurch.us](http://www.stlawrencechurch.us)



Greetings!

Recently, our staff cleaned out some old office files and we ran across a stewardship letter from Fr. Carmen Petrone. His letter addressed the financial health of the parish. As you can imagine: difficulties paying bills, supplying incomes, fixing old buildings and sustaining parish life. Did I mention that this was **written in the Eighties?** Nothing new under the sun...we simply can't return to that normal.

I don't have to tell you that this past year has **been one like no other!** The coronavirus pandemic has changed everything, including the way we worship and gather as a community. But during times of trial such as these, Jesus Christ stands firm, and our Church's mission to love God and our neighbor has become even more essential. Now more than ever, our parish is needed to help our communities move forward in faith, hope & healing, and we can't do this important work without your support.

Both Saint Mary's and Saint Lawrence will have an **upcoming weekend dedicated** to our story, stewardship and commitment to resources for our ministry plan and recovery efforts. We are excited about the chance to restart and refocus your efforts in bringing people to God. I invite you to review the material and prayerfully consider your response.

Please know that any commitment, no matter the amount, is most appreciated and will enable us to plan to continue our mission of loving God and serving our neighbor.

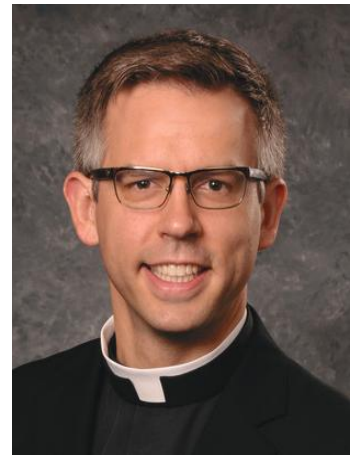
I think this can help our parishes focus on the importance of our ministry and our impact is only limited by the renewed commitment of **YOU...**the **faithful Catholics** here in our community.

Every blessing,

A handwritten signature in black ink that reads "Rev. Ben D. Syberg". The signature is written in a cursive, flowing style.

Fr. Ben Syberg

### *Parish Clergy*



**Fr. Ben Syberg**  
Pastor

*"God is our refuge  
and our strength,  
an ever-present help  
in distress."*

**Psalm 46:1**



# Loving Our Neighbor

Showing Christ's Love to Our Community in a Time of Need

## OUTREACH

Our parish is reaching out to serve and minister to those in need. If you or someone you know needs assistance, please contact us.

## CARING FOR THE HOMEBOUND

We continue to care for those who are unable to leave their homes at this time. If you know of a family or an individual that is homebound, please let the parish know.

## PASTORAL CARE

If you or someone you know is in need of the care of a priest, we are here for you.



## WAYS TO REACH US

Phone: 812-537-3992

Pastor Email: [frsyberg@sls-apps.org](mailto:frsyberg@sls-apps.org)

Website: [www.stlawrencechurch.us](http://www.stlawrencechurch.us)

# We Invite You To...

## HAVE FAITH

Now more than ever, we should remember that God is our strength. We can turn to Him through prayer and in thanksgiving. As you pray, please remember in a special way:

- Our Neighbors & Community
- Church Leadership
- Our Local Government
- Our National Government
- Health Care Providers
- The Sick and Suffering
- Those Who Have Died



## STAY HOPEFUL

We remember that our hope is found in the Lord! As hopeful people, we want to inspire the hope of Christ in others:

- Send a cheerful email
- Spend time with loved ones
- Write a letter to a friend
- Make a meal for a neighbor
- Spend quality time in prayer



## AID HEALING

The work and ministry of our church continues, and the need is greater than ever! We rely on your support. Please continue to give generously through your offertory gifts to meet the physical and spiritual needs of our friends, neighbors, and community.



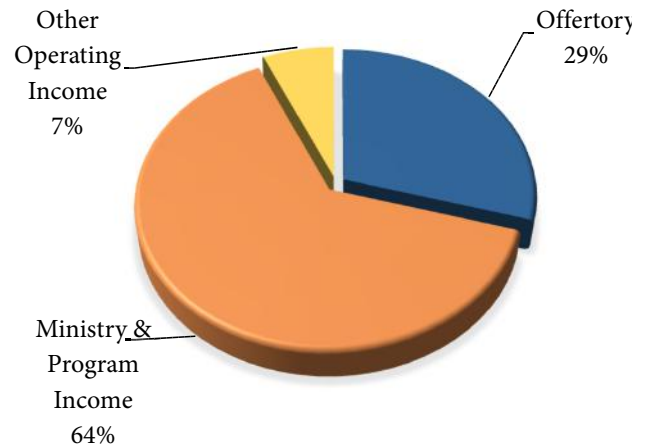
# Financial Snapshot

## 2020/2021 Fiscal Year

### Operating Income

Offertory	\$514,776.56
Ministry & Program Income	\$1,118,326.01
Other Operating Income	<u>\$115,364.97</u>

*Total Operating Income*                      \$1,748,467.54

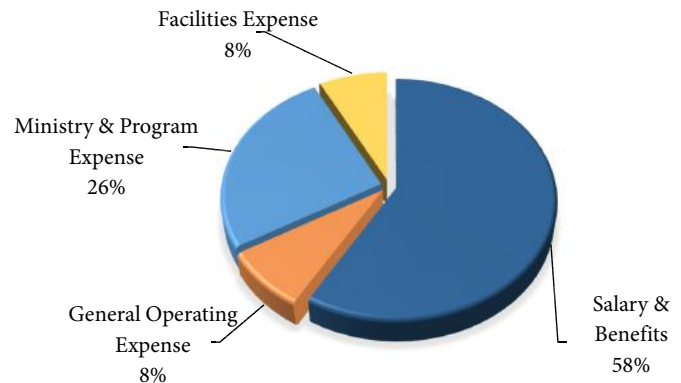


### Operating Expenses

Salary & Benefits	\$1,105,774.89
General Operating Expense	\$152,825.41
Ministry & Program Expense	\$486,377.83 *
Facilities Expense	<u>\$144,358.45</u>

*Total Operating Expense*                      \$1,889,336.58

*Net Operating Surplus/  
(Deficit)*    **-\$140,869.04**



\*\$250,000 school subsidy included

# Ways to Give

## **ELECTRONIC GIVING**

Electronic giving is the **preferred, easy, safe and secure** way to give to our parish. To schedule a recurring electronic gift directly from your bank account or credit card, please visit our website at [www.stlawrencechurch.us](http://www.stlawrencechurch.us) and follow the instructions. We appreciate all parishioners using this means to support our parish.

## **OFFERING ENVELOPES**

Offering envelopes are still provided as a traditional way to support the parish. They can be shared at Mass during the offertory, dropped off at the church office or mailed in.

## **STOCK OPTIONS**

Donor-advised funds are another easy way to make a contribution, with tax advantages to the parishioner. Contact the parish office for more information.